

CERTIFIED RECORD OF LAND CORNER MONUMENTATION

History of original corner establishment:
New Corner

*

DIAGRAM
T10S R32E
NW1/16
+
S6

Description of corner evidence found:

Description of monument and accessories I establish to perpetuate the original location of this corner:

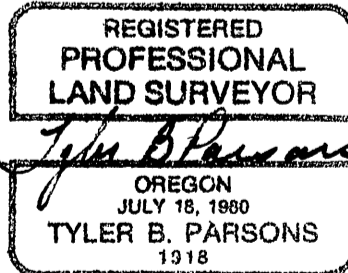
Set a 2x28" aluminum monument 22" in the ground.
I establish new bearing trees:
A 10" Fir bears N 45° E, 25.0 ft, scribed NW1/16S6BT.
An 8" Larch bears N 67° W, 5.0 ft, scribed NW1/16S6BT.

T10S R32E
NW1/16
+
S6
PLS1918
1988

New BTs have 3/4" brass washers marked PLS1918 attached to the BT blaze, faces and bands painted with red tree marking paint, and BT tags and Attention or Land Survey Monument signs. A steel fence post with Attention or Land Survey Monument sign is driven approximately 3-5 feet from the corner.

Sun Cadastral Survey, Cont No. 53-04H1-7-4011
Field Book: 4-38
Work accomplished: 8/30/88
Witnesses: Louise Parsons, Douglas Parsons
Job No.: 87221

PARSONS SURVEYING
1915 S.E. Stone Street
Corvallis, OR 97333
(503) 752-7515



Office of COUNTY SURVEYOR County of GRANT
State of OREGON, I hereby certify that the within instrument was filed in this office
for record on the 17th day of Feb, 1989

Robert D. Dwyer by _____
(COUNTY OFFICIAL) (DEPUTY)